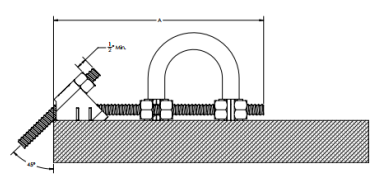


BH25-2



OCM BH25 Adjustable Half Hangers are designed to support the fascia overhang formwork on projects where welding is not permitted and rebar or headed stud shear connectors are available to connect the hanger to. The hanger consists of a 1/2" diameter End Clip welded to a length of 1/2" Coil Rod. One or two stirrup clips are positioned on the threaded rod and are retained by two coil nuts each. Standard unit is 9" overall with one stirrup clip. Minimum overall length is 6". Other lengths, additional clips and coil nuts are available upon request.

Part Number	BH25-2
Safe Working Load (lbs)	3,000
Dia. (in)	1/2"
Clips	2