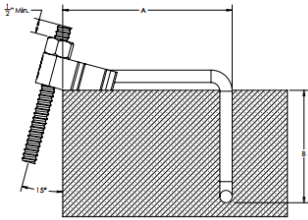


## BH24-8PR



OCM BH24 90 degree Precast Half Hangers are provided in 4 different types and load capacities. They are designed to be cast into the top of a Precast/Prestressed Bridge Beam or Girder and subsequently supports the fascia overhang formwork. These hangers are installed by the precaster during beam or girder production at predetermined locations typically provided by the bridge contractor. The precaster must ensure that they are installed with 1/8" clearance between the edge of the beam and the Coil Bolt, and also so the End Clip will bear on the top surface of the beam. Failure to do so can result in reduction of the hangers Safe Working Load.

<b>Part Number</b>	BH24-8PR
<b>Safe Working Load (lbs)</b>	6,000
<b>Dia. (in)</b>	1/2"
<b>End Clip Angle</b>	15