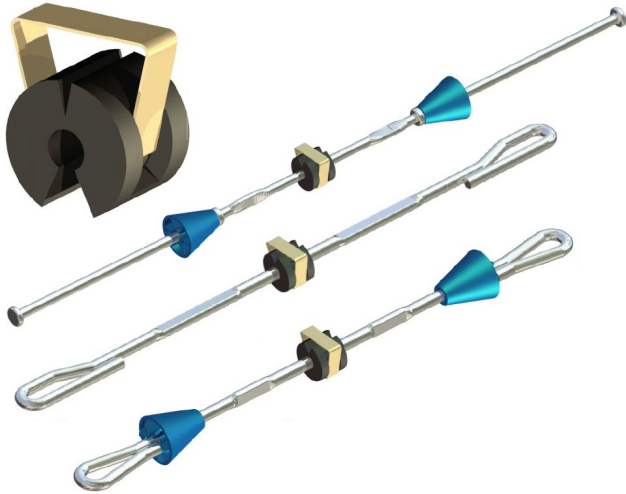


FIELD-INSTALLED HYDROPHILIC WATERSTOP RING



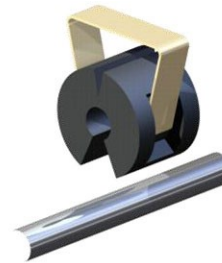
FEATURES AND BENEFITS

- Prevents water leakage along tie penetrations.
- Easy attachment to the tie.
- The ULTRA-C-RING is a Hydrophilic Waterstop (that swells when in contact with water, stops water penetration).
- Versatile can be used with: SNAP TIES, LOOP TIES, HEAVY DUTY LOOP TIES, SELF CENTERING LOOP TIES.
- Can be installed with formwork already assembled.
- Proven to be more successful in stopping water penetration than traditional neoprene washer.
- Avoid special orders, long lead times, and expedited freight charges.

PRODUCT INFORMATION

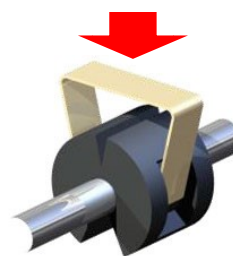
OCM Part #	For Use With	Box Quantity
25-UCR	Snap Ties, Standard Loop Ties	100 pcs.
25-UCR-H	Heavy Duty Loop Ties, Heavy Duty Snap Ties, Self Centering Loop Ties	100 pcs.

INSTALLATION

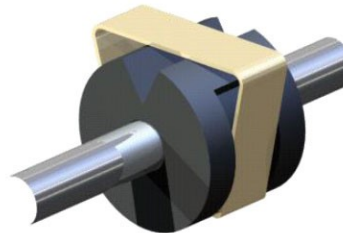


1 Place the ULTRA-C-RING onto the tie.

PUSH



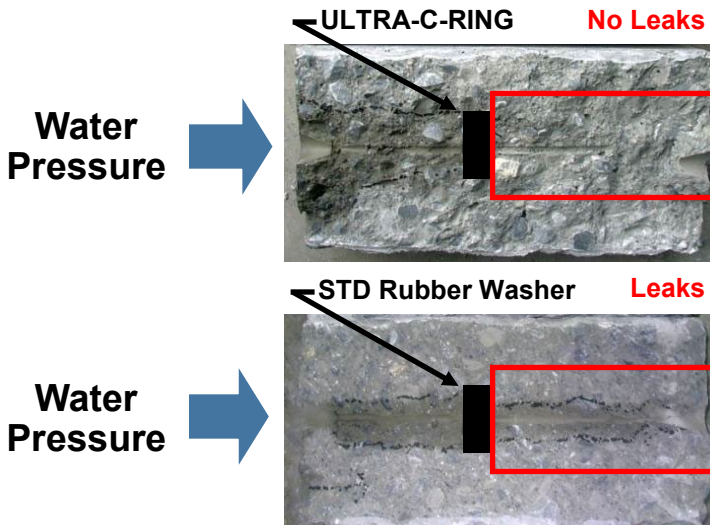
2 Push the clip down.



3 Done!

WATER PENETRATION TEST RESULT

**Actual Product Test*



OCM, Inc.

1120 Peterson Road, Grayslake, IL 60030

Toll Free: 866-457-5710 • Phone: 847-462-4258 • FAX: 847-462-4259

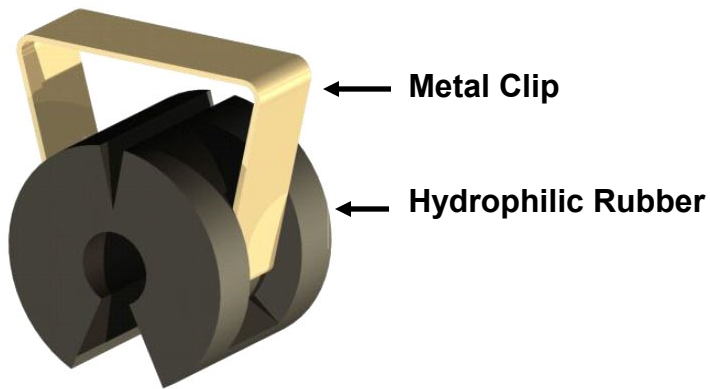
www.adeka.com • www.ocm-inc.com • sales@ocm-inc.com

WATER SWELLING TIE ROD WATERSTOP

Sealing form tie-rods against penetration of water from wet-face of structure.

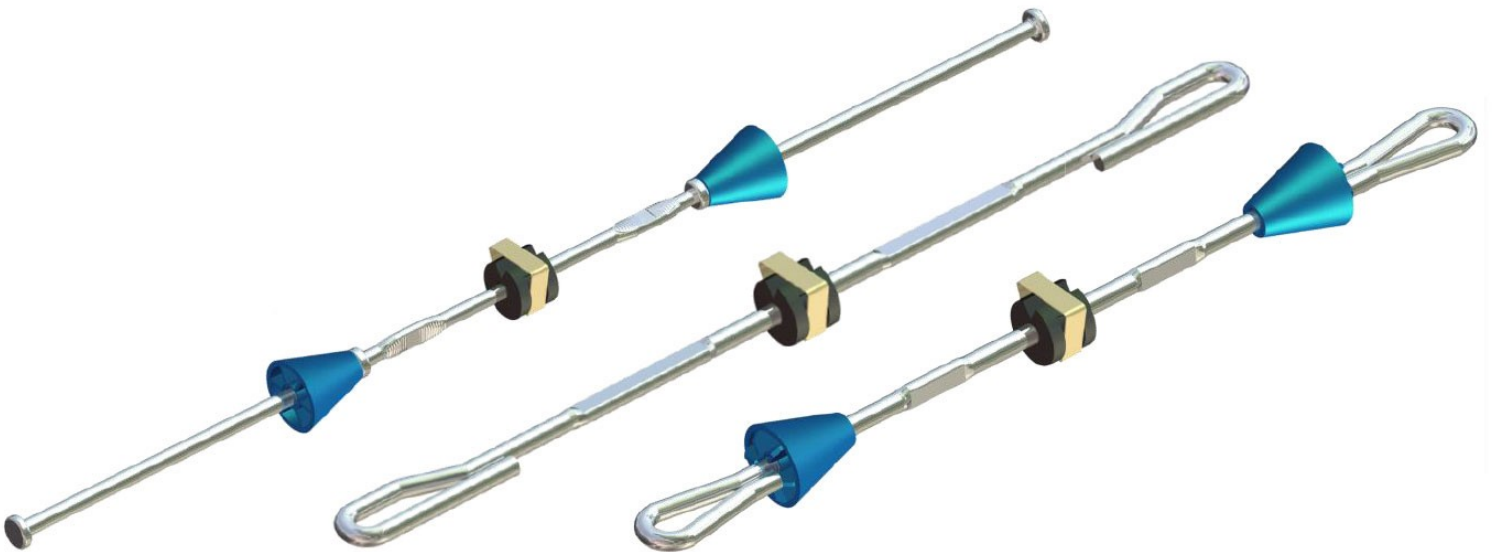
Adeka Ultra-C-Rings are manufactured by Adeka Corporation and distributed by OCM, Inc. Chicago, IL. USA Call (847) 955-9700 for sales and technical information.

The product shall be a 2 component tie-rod waterstop consisting of a metal clip and vulcanized natural rubber ring.



Property	Method	KC Ultra-C-Ring
Hardness Hs	JIS K6253 (ASTM D2240)	A50
Tensile Strength MPa	JIS K6251 (ASTM D412)	9 MPa
Elongation (%)	JIS K6251 (ASTM D412)	680%
Specific Gravity	JIS K6350 (ASTM D792)	1.42
Volume Exp. %	In-House	80%

The product shall meet the minimum performance requirements as shown in the table above and in the official Adeka literature.



OCM, Inc.

1120 Peterson Road, Grayslake, IL 60030

Toll Free: 866-457-5710 • Phone: 847-462-4258 • FAX: 847-462-4259

www.adeka.com • www.ocm-inc.com • sales@ocm-inc.com

1. Material: KC (1.5 times expansion)

2. Installation of ULTRA-C-RING



Ration Water/Concrete (%)	Strength of Concrete (kgf/cm ²)	Fluidity of Concrete (cm)	Fine Aggregate (kg/m ³)	Rough Aggregate (kg/m ³)
54.8	240	15	806	1,004

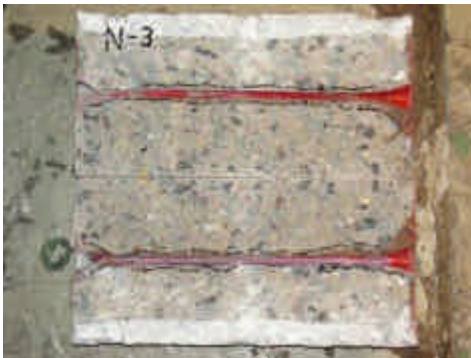


Pressure: 0.3Mpa = 3.0 Kgf/cm² = 43.5 psi = (water depth approximately 100 feet)

Pressure Time: 1 hour

(Test was stopped at first leak evidence.)

3. Concrete Conditions



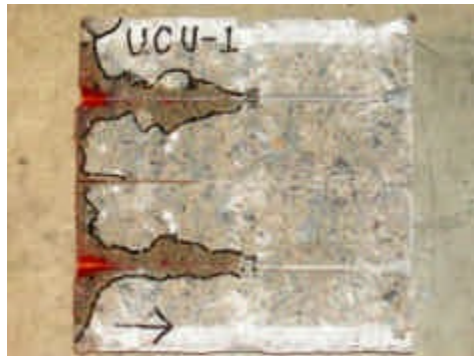
Snap Tie
(LEAK)



Neoprene
Rubber Ring
(LEAK)



ULTRA RING
(NO LEAK)



ULTRA-C-RING
(NO LEAK)