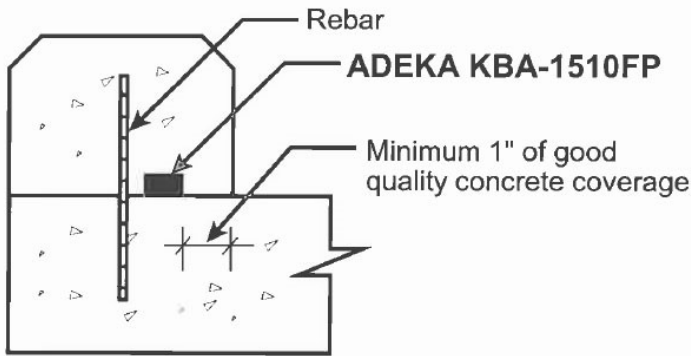


### SECONDARY CONTAINMENT CURBS

**Cost Effective and Secure**

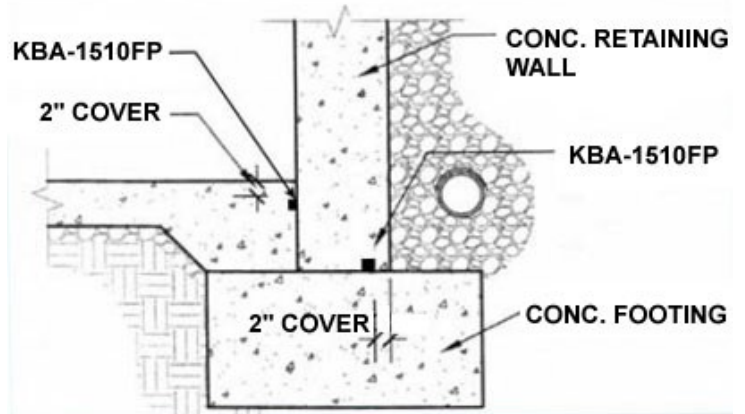


No Scale

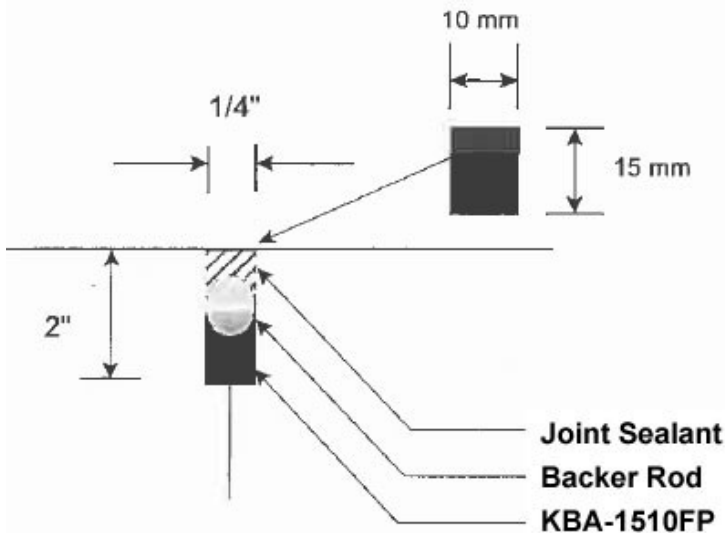
### CONTAINMENT CURB

### REPLACE 6" FLAT PVC

**Slab to Wall and Wall to Slab**



### SEALING 1/4" to 3/8" OPEN JOINT OR CRACK

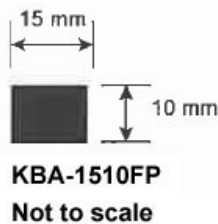


#### 1/4" Gap

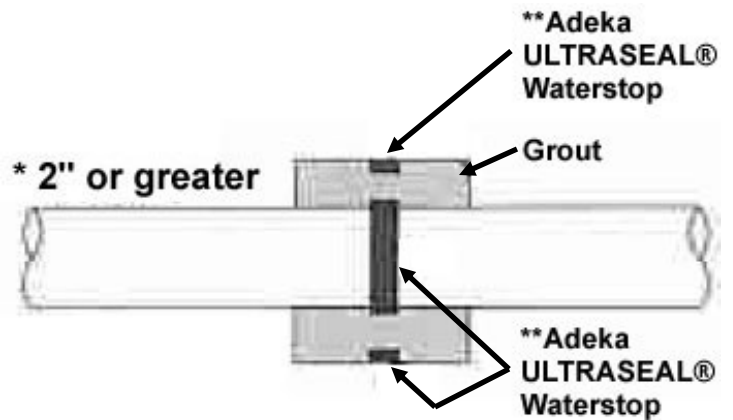
Stretch and insert KBA-1510FP from 10mm side.

#### 3/8" Gap

Stretch and insert KBA-1510FP from 15mm side.



### 2 INCH OR GREATER ANNULAR SPACE PIPE PENETRATION



\* Annular space should be wide enough to allow consistent grout placement between the two strips.

\*\* Choice of Adeka waterstop depends on wall thickness, diameter of pipe and hydrostatic head. Choices include: MC-2010MN, kBA-1510FP, MC-2005T or P-201

Use MC-2010MN when wall thickness is greater than 10" and annular space is greater than 2". Pipe diameter should exceed 24".

Use MC-2005T when wall thickness is greater than 10" and annular space is greater than 2". Pipe diameter should be 4" or greater and less than 24".

Use KBA-1510FP when pipe diameter is greater than 2" and wall thickness is greater than 4". Use when hydrostatic head is less than 20 feet.

Use P-201 in above conditions but vary bead size. MC-2010MN and MC-2005T conditions—use 3/8" x 1/2" bead size. KBA-1510FP conditions—use 1/8" x 1/2" bead size.

OCM, Inc.

1120 Peterson Road, Grayslake, IL 60030

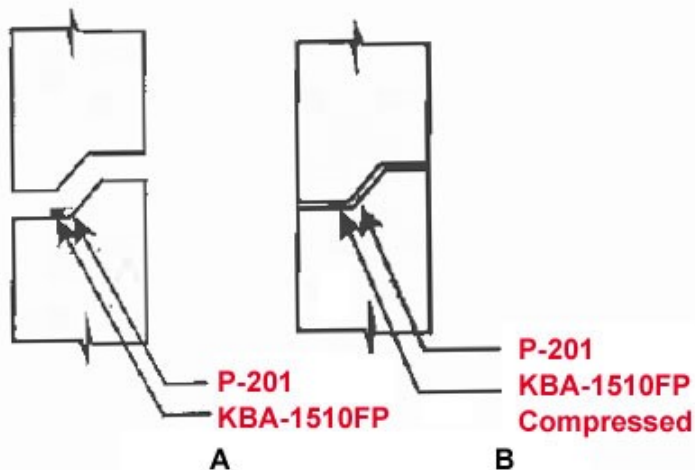
Toll Free: 866-457-5710 • Phone: 847-462-4258

FAX: 847-462-4259

www.adeka.com • www.ocm-inc.com

sales@ocm-inc.com

**SEALING PRECAST  
P-201 and KBA-1510FP**

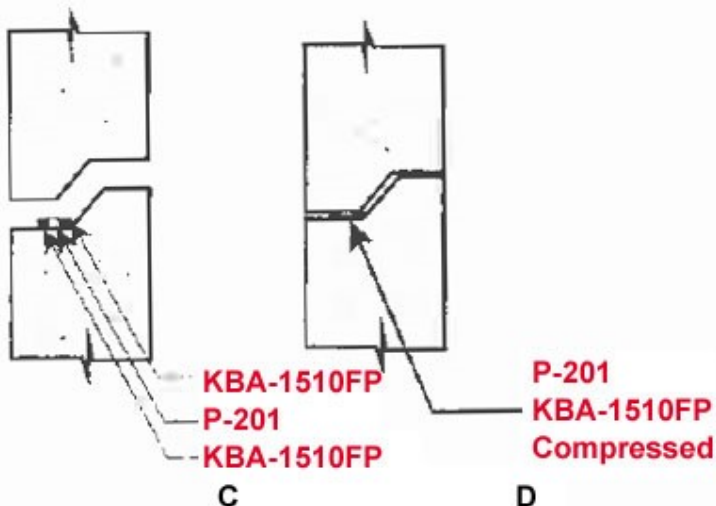


Water tightness depends on tolerance (contact area) of the joint. The above method depends on the final gap of no more than 8 mm.

KBA-1510FP and P-201 must be compressed when second segment is placed.

KBA-1510FP will act as a barrier or containment on one side of the P-201. This will increase the effectiveness of the P-201.

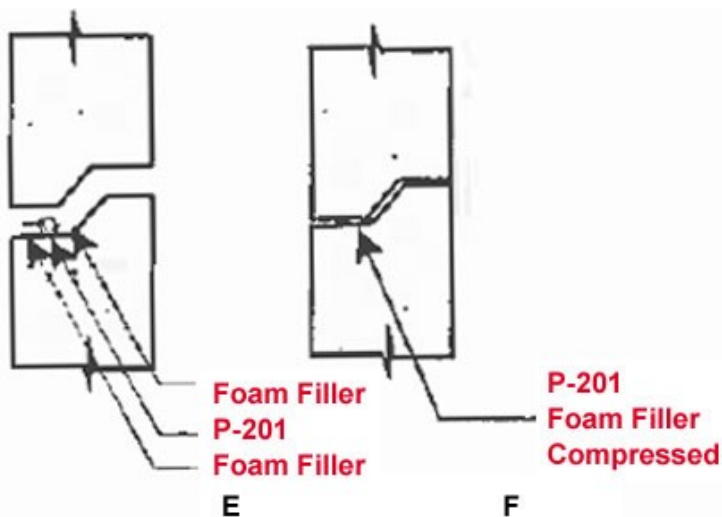
An oversized bead of P-201 by itself will be sufficient in most cases however, the bead must be compressed by at least 20% when second segment is placed. The KBA offers some additional security.



Again water tightness depends on tolerance (contact area) of the joint. This method of sandwiching a bead of P-201 between two strips of KBA-1510FP (approximately 1/2" between the strips) provides additional security for higher hydrostatic head and wider gap.

The KBA-1510FP—P-201—KBA-1510FP must be compressed when second segment is placed. This method is acceptable for 9m head if the gap is 8mm or less when second segment is placed.

KBA-1510FP will act as a barrier or containment for the P-201. This will increase the effectiveness of the P-201.



If the gap between segments exceeds 8mm, glue two strips of compressible closed cell foam joint filler, leaving a gap between the foam strips equal to the gap when the segments are joined.

Overfill void between the foam strips with P-201. Second segment may be placed as soon as the P-201 is applied.

This method of sandwiching a band of P-201 between two strips of compressible foam provides additional security for higher hydrostatic head and wider gap.

The compressible foam—P-201 sandwich must be compressed when second segment is placed.

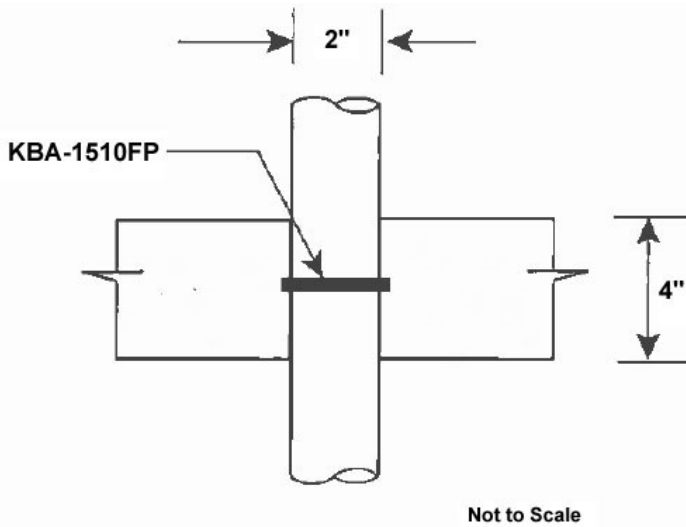
**OCM, Inc.**

**1120 Peterson Road, Grayslake, IL 60030**

**Toll Free: 866-457-5710 • Phone: 847-462-4258 • FAX: 847-462-4259**

**www.adeka.com • www.ocm-inc.com • sales@ocm-inc.com**

## SEALING PIPE PENETRATION

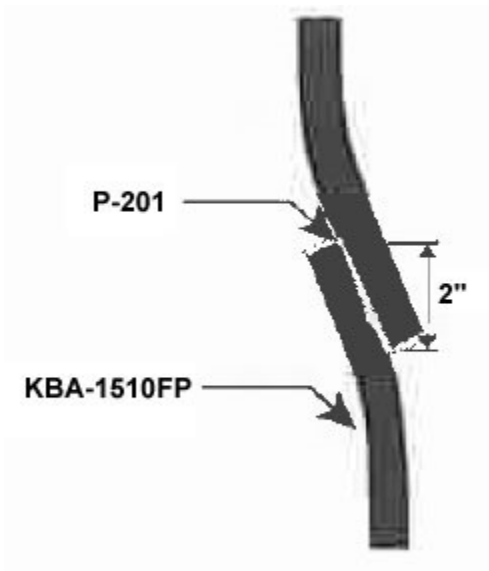


Adeka ULTRASEAL® KBA-1510FP is an excellent choice for sealing pipe penetrations under the following conditions:

1. Hydrostatic head is less than 25 feet
2. Non-moving pipe or joint
- 3.

### General Installation Instructions:

1. Thoroughly clean and dry pipe.
2. Apply rubber glue to KBA-1510FP and to the pipe.
3. Use Butyl Tape or fast setting glue. KBA-1510FP must be firmly attached to the pipe prior to placing concrete.
4. Overlap as shown in the overlap detail.
5. Place small bead of P-201 on seam of splice. Press P-201 into the seam.
6. Place concrete—concrete must be thoroughly consolidated around pipe to provide permanent and positive waterstop.



OCM, Inc.

1120 Peterson Road, Grayslake, IL 60030

Toll Free: 866-457-5710 • Phone: 847-462-4258 • FAX: 847-462-4259

www.adeka.com • www.ocm-inc.com • sales@ocm-inc.com