

MATERIALS ON HAND LIST

- Plastic buckets (see photo) approximately 4 gallon size for mixing -
- Measuring bucket marked at 7.5 quarts (1/2 of the resin - or appropriate measure for quantity needed).
- Measuring container marked at 0.5 quarts (1/2 of the hardener - or appropriate measure for quantity needed.)
- Drill and mixing paddle
- Containers for pouring A-30 into interlock (Coffee cans, plastic containers or dispensers work the best)
- Insulating foam, backer rod, sealant or similar to seal ends of piles (see photo for example)
- Tool for checking depth of A-30 in the interlock (see photo)
- Disposable paint stirring sticks to scrape remaining resin into mixing container
- Suitable gloves and clothes (A-30 is difficult to remove from clothing)
- Carpenters level for checking level of pile (should be fairly long level)

1. Clean - interlocks **MUST** be clean. Use wire brush (hand or electric drill) to remove any loose rust or debris. Use high pressure air to blow grit and debris from the interlock.

2. Level Piles - (Tip) Level two parallel H-Beams or similar about 15 feet apart. This will save leveling each pile. Place the piles on the leveled H-Beam. Check level of the piles. **The piles must remain level** during the curing process. Sequence the application so the A-30 in treated piles will have cured before moving.



Use urethane foam or similar material to dam ends of interlock.

OCM, Inc.

1120 Peterson Road, Grayslake, IL 60030

Toll Free: 866-457-5710 • Phone: 847-462-4258 • FAX: 847-462-4259

www.adeka.com • www.ocm-inc.com • sales@ocm-inc.com

3. Measuring and Mixing - The A-30 is a two component material (15:1 ratio).

IMPORTANT - measure the 15:1 ratio carefully and mix thoroughly. The material may not cure due to incomplete mixing. Don't mix more than you can use. 2 quarts of resin will require 4.25 ounces of hardener. Or another example 7.5 quarts of resin will require 0.5 quarts of hardener. **POT LIFE is approximately 2 hours!**

4. Protection - Keep interlocks dry before driving. Piles may be stored for several weeks if kept dry.



5. Driving - **Piles must be driven to their final depth within 2 hours of hitting ground water or any water.**

6. Brushing with a little soapy water just prior to driving may help the interlocks slide together easier.

7. Grind any rough edges off of the leading edge of the interlock before driving

8. Drive with the non-treated side leading

OCM, Inc.

1120 Peterson Road, Grayslake, IL 60030

Toll Free: 866-457-5710 • Phone: 847-462-4258 • FAX: 847-462-4259

www.adeka.com • www.ocm-inc.com • sales@ocm-inc.com

**CMRM EZ 95 (H/G -CF cold-formed)
Fill with A-30 to depth of 1/4"**

IMPORTANT:

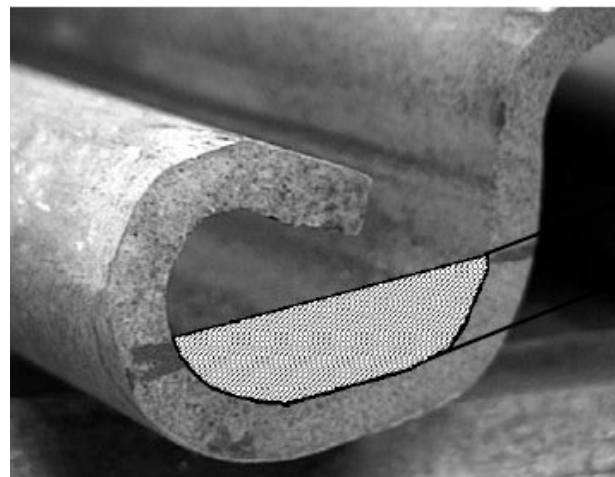
Profiles vary in gap width. Depth of A-30 must be less than the gap width when the interlock is fully extended.

Rule of thumb - A-30 depth should be approximately 60% of extended gap width. For example, a gap width of 3/8" will require approximately 1/4" depth of A-30 (maximum).

Estimated coverage amount of A-30 is approximately 60-70 feet per gallon at 1/4" depth.

ALL VALUES ARE APPROXIMATE.
THE VALUES ARE FOR ESTIMATION
PURPOSE ONLY.

Measurement by field application is the most accurate method of volume determination.



OCM, Inc.

1120 Peterson Road, Grayslake, IL 60030

Toll Free: 866-457-5710 • Phone: 847-462-4258 • FAX: 847-462-4259

www.adeka.com • www.ocm-inc.com • sales@ocm-inc.com

CMRM Hook and Grip Sheet Piles
Piles inverted after A-30 curing to protect from rain



Interlock Profiles



OCM, Inc.

1120 Peterson Road, Grayslake, IL 60030

Toll Free: 866-457-5710 • Phone: 847-462-4258 • FAX: 847-462-4259

www.adeka.com • www.ocm-inc.com • sales@ocm-inc.com