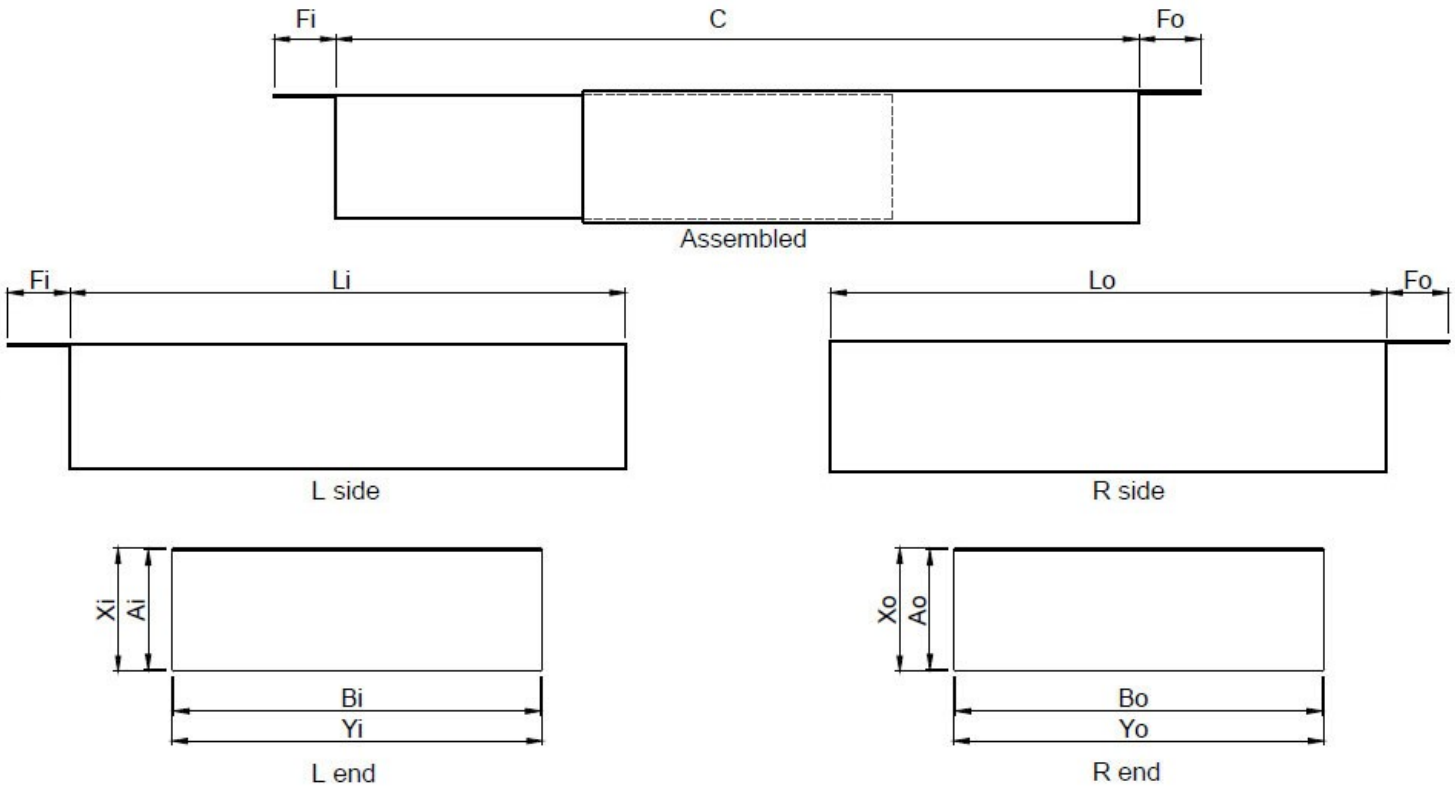


Telesleeve™

Standard Sizes



STANDARD SIZES SHOWN—CUSTOM SIZES AVAILABLE (All units are in inches)

OCM Part #	Ai	Bi	C Max	C Min	Li/Lo	Fi/Fo	Ao	Bo	Xi	Yi	Xo	Yo
TS2500618	2.5	6.00	18.00	12.00	12.00	1.5	2.68	6.18	2.68	6.12	2.80	6.30
TS2500628	2.5	6.00	28.00	18.00	18.00	1.5	2.68	6.18	2.68	6.12	2.80	6.30
TS2500642	2.5	6.00	42.00	28.00	28.00	1.5	2.68	6.18	2.68	6.12	2.80	6.30
TS2501218	2.5	12.00	18.00	12.00	12.00	1.5	2.68	12.18	2.68	12.12	2.80	12.30
TS2501228	2.5	12.00	28.00	18.00	18.00	1.5	2.68	12.18	2.68	12.12	2.80	12.30
TS2501242	2.5	12.00	42.00	28.00	28.00	1.5	2.68	12.18	2.68	12.12	2.80	12.30

STANDARD MATERIAL THICKNESS: - 16 Ga (.0598")

WELDING ELECTRODE: - EC409 (wire)

CODE COMPLIANCE: - ACI 301 6.5 and ACI 318 6.3.1

MATERIAL CONFORMANCE::

Sheet Metal (Carbon Steel): ASTM1008/A1008M

Mill Galvanized: ASTM A653/A653M Class G60 (0.6 oz/ft²)

Sheet Metal (Stainless Steel): ASTM A240/A240M (AISI Type 304)

US Patent # 8,915,038

GENERAL NOTES:

- 1) Custom sizes are available. Lead/delivery times may vary.
- 2) Handling & Installation of TELESLEEVE must be in accordance with OSHA (and all other jurisdictional agency) guidelines.
- 3) TELESLEEVE is not intended to support any loading from personnel.

INSTALLATION NOTES:

- 1) Secure flanges 'Fi' & 'Fo' to deck formwork as required to prevent displacement.
- 2) Reinforcing steel shall not be allowed to contact TELESLEEVE after primary installation.

TELESLEEVE™ IS PROUDLY CONSTRUCTED IN THE USA

OCM, Inc.

1215 Henri Drive, Wauconda, IL 60084

Toll Free: 866-457-5710 • Phone: 847-462-4258 • FAX: 847-462-4259

www.adeka.com • www.ocm-inc.com • sales@ocm-inc.com