



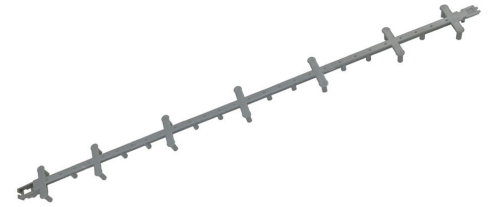
OCM

100 YEARS OF STRENGTH

POLYMER COMPOSITE PRODUCTS

OCM, Inc.
1120 E. Peterson Road
Grayslake, IL 60030
Toll Free: 866-457-5710
Phone: 847-462-4258
FAX: 847-462-4259
www.ocm-inc.com
sales@ocm-inc.com

CONTINUOUS BOLSTERS



INDIVIDUAL CHAIRS



SPACERS



SPECIALTY PRODUCTS



REBAR CAPS



CONTINUOUS BOLSTERS

Slab Bolster Grey

The OCM Slab Bolster Grey is a heavy duty polymer composite slab bolster that can be used to support rebar in all types of slab or wall applications.

Features

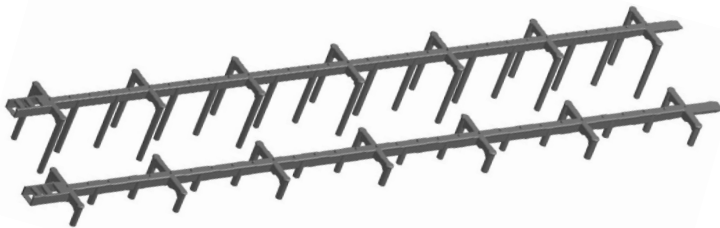
- Interlocking end tabs provide extra strong connection and enables continuous runs of slab bolster.
- Made from heavy duty yet flexible polymer composite material which will withstand heavy loads, but still flexible enough to bend 180° for side wall spacers and resistant to breaking and snapping.
- Wide footprint provides stability under load.
- Flat top allows the user to slide rebar freely into position during placement.


Slab Bolster - Dimpled Flat Top

The OCM slab bolster is a heavy duty polymer composite slab bolster that can be used to support rebar in all types of slab or wall applications.

Features

- Interlocking end tabs provide extra strong connection and enables continuous runs of slab bolster.
- Made from heavy duty yet flexible polymer composite material which will withstand heavy loads, but still flexible enough to bend 180° for side wall spacers and resistant to breaking and snapping.
- Wide footprint provides stability under load.
- Flat top allows the user to slide rebar freely into position during placement.


Beam Bolster

OCM Beam Bolster (BBCOMP) is designed to support heavier loads encountered in forming concrete beams, segmental bridge sections, core wall form side spacers, and other applications requiring traditional Steel Beam Bolster.

OCM Beam Bolster eliminates corrosion concerns while providing unparalleled strength capacity. BBCOMP is also flexible enough to form circles for side spacers without cracking, kinking, or breaking. BBCOMP ends are connectable achieving any lengths desired for larger projects.

Features

- Approved for use in DOT and Commercial projects.
- Meets CRSI Requirements for all Classes of corrosion protection.
- Manufactured in 8 heights from 3/4" to 3".
- Polycarbonate material produces improved load capacity.
- Supports any bar diameter.
- Individual sections easily snap together to form continuous lengths.
- Beam Bolster is assembled in 60" lengths and bundled for easy placing, storage and shipping.


Slab Bolster Upper

OCM Slab Bolster Uppers are made from a very strong polymer composite material to support and provide proper cover for rebar in elevated slabs, tilt-wall, precast, post tension decks, and D.O.T. projects. This is the ideal product to support the second layer of rebar.

Features

- Patent 11286668.
- Meets CRSI requirements for corrosion protection, design, and performance.
- ABS material produces improved load capacity.
- Easy connection for speed of installation.
- Great alternative to plain steel, epoxy, galvanized, and stainless steel material and shipping.

INDIVIDUAL CHAIRS

Unichair® Rebar Support

The Unichair® Rebar Support is an all purpose individual high chair ideal for use on wood, steel, and concrete. It is also well suited for TILT-UP applications. They have been tested and approved for Department of Transportation (D.O.T) use.

Features

- The OCM Unichair® Rebar Support has an open center which allows concrete to flow through the center of the chair to improve aggregate flow and concrete consolidation.
- Made from high strength polymer composite material, so they perform very well under normal loads and will not rust.
- They have angled legs to prevent torsion and buckling.
- Sizes above 4 3/4" have an added ring for improved strength and stability.
- Feet are tapered so there is minimum surface contact to make chairs virtually disappear when form face is stripped. Legs can also be stapled for added stability.
- Cradle shaped top to aid in positioning of rebar.
- Concrete gray color helps them to blend in with concrete color.
- Dual cradle head allows for 1 chair to be used for 2 different heights. Decreases amount of inventory, and increases flexibility for use of each chair.


Sand Plate for Unichair® Rebar Support

Snap-on polymer composite sand plate for Unichair® Rebar Support.

Features

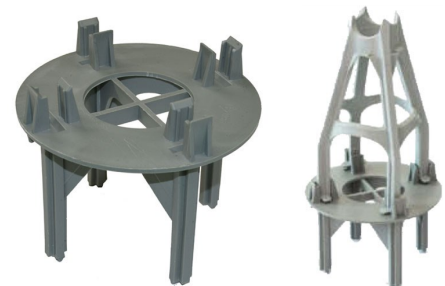
- Applications: Slab on grade, insulated sandwich panel, Department of Transportation (D.O.T.), vapor barrier, poor or loosely compacted soil.


Adjustable Unichair®

The OCM Adjustable Unichair® is a versatile polymer composite support that provides a range of heights for multiple applications.

Features

- Patent pending.
- 3 different chair sizes to provide a total height range from 3" on the smallest chair to 18.5" on the tallest chair.
- Each chair shows the exact height along the threaded rod to ensure the proper height is achieved .
- Dual cradle head allows for 2 different heights 1/2" apart .
- Tapered footprint for minimal surface contact on wood decks.
- Very strong polymer composite and design.
- Chair can be used for rebar loading, post tension strand, and ledger supports in tilt walls and precast panels.
- Removable coil threaded rod may be replaced with steel coil rod and converted to a screed pipe holder.


**Unichair® Rebar Support
4" Base Extension**

Our patented, stackable design creates an all polymer composite high chair 10" and taller to speed up both rebar placement and post-tension cable installation. Stack as many Unichair® Rebar Support 4" Base Extensions on top of each other as you need before placing the final Unichair® Rebar Support on top.

Features

- Wide, stable base to prevent tipping during placement.
- Same tapered footprint that disappears from concrete face.
- Made of very strong polymer composite to support heavy loads.

INDIVIDUAL CHAIRS cont.

**Unichair® Rebar Support
2" Base Extension**

Our patented, stackable design has been expanded to include the new 2" Base Extension. The 2" Base Extension is used with Unichair® Rebar Supports from 1" to 5-3/4" to speed up both rebar placement and post-tension cable installation. Stack as many Unichair® Rebar Support 2" Base Extensions on top of each other as you need before placing the final Unichair® Polymer Composite Rebar Support on top.

Features

- Instantly provides a solution for out of stock sizes.
- Reduce Inventory SKU's for slower moving heights.
- Wide, stable base to prevent tipping during placement.
- Same tapered footprint that disappears from concrete face.
- Made of very strong polymer composite to support heavy loads.
- Very secure connection for consistent height and performance.


Cradle Chair (PCC)

OCM Cradle Chair may be used to support mesh or rebar in many applications requiring heavy load capacity. Common applications include slab on grade, insulated sandwich panels, vapor barrier, and on poorly compacted or loose soils. OCM Polymer Composite Cradle Chairs meet current CRSI requirements.

Features

- Excellent strength capacity - Holds over 600 lbs.
- Cradle will accommodate up to #8 re-bar.
- Multiple heights - 2 heights per chair.
- Will not puncture vapor barrier or insulation.


Stack-O-Chair™

The Stack-O-Chair™ is a stackable chair that enables multiple height combinations in precast beds or on wood decks.

Features

- 2 sizes: 1-1/2" to 2" and 2-1/2" to 3".
- Unlimited stacking to achieve desired height.
- Made from strong, durable polymer composite.
- Can be used with small sand plate and 2" Base Extension for added versatility.
- Can be used with PHC chairs .75" to 5.75"
- Utility and Design Patent pending.


Grade Chair With Base

The OCM Grade Chair with Base is designed with a wide base ring to provide stability on loosely compacted or expansive soils.

Features

- Made from high strength polymer composite material which provides good performance under loading conditions.
- "Snap-in top" locks rebar into chair for secure placement.
- Each chair comes in 2 height combinations to provide flexibility based on grading conditions and helps to reduce inventory.
- Meet CRSI requirements per table 3-4.

INDIVIDUAL CHAIRS cont.

Paving Chairs

The OCM Paving Chairs are a versatile Snap on Chair that is used for on-grade and Department of Transportation (D.O.T) work. This chair is available in black or white and it is ideal for highway paving applications.

Features

- Snaps easily on to rebar for secure placement.
- Round base for loose or sandy grades.


Pro Chairs

OCM, Inc's Pro Chairs are made with high performance, high strength polymer composite material that won't rust. The cradle shaped head will provide aid in positioning rebar. The 2-in-1 cradle head allows for one Pro Chair to be used for two different heights, reducing the amount of inventory you need to take on.

Features

- Made with high performance, high strength polymer composite material.
- No rusting.
- Cradle shaped for aid in positioning rebar.
- The 2-in-1 cradle head allows for one Pro Chair to be used for two different heights, reducing your amount of inventory.

SPACERS

Wheel Spacers—Mesh

OCM Wheel Spacers are an all polymer composite spacer used as an economical Mesh support in vertical and horizontal formwork applications.

Features

- Eliminates exposed metal from the face of concrete.
- Minimal footprint on face of form.
- Openings allow proper concrete coverage.
- Designed to fit large range of Mesh gauges.


Wheel Spacers—Rebar

OCM Wheel Spacers is a rebar support which are a quick easy installation used as an economical support in vertical or horizontal formwork.

Features

- Eliminates exposed metal from the face of concrete.
- Minimal footprint on face of form.
- Openings allow proper concrete flow.
- Accommodates #3 to #6 Rebar and can be used with wire mesh.
- Available in sizes from 3/4" to 3" coverage.

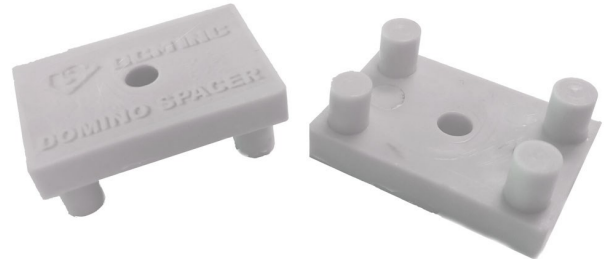
SPACERS cont.

Locking Wheel Spacer

The OCM Locking Wheel Spacer is a polymer composite bar support used to maintain the position of rebar during placement and is typically used in lateral positioning applications. It can be used to position vertical rebar from the side forms.

Features

- Very Strong and Durable Polymer Composite Rebar Support.
- Positive Tight Locking on to Rebar.
- Color is Matched to Concrete Color.
- Unique Patent Pending Locking Latch Available in sizes from 3/4" to 3" coverage.


OCM All-Purpose Domino Spacer

All-purpose 1" x 1-1/2" x 1/2" tall polymer composite domino spacer.

Features

- Keep all steel forming parts from showing through formed concrete walls and decks.
- Keep metal tips, tie wire, steel strapping, and any miscellaneous steel parts off of the finished concrete surface.
- Concrete grey color and small footprint provides minimal surface contact to blend into exposed concrete surfaces to make spacers virtually disappear.
- Designed to be nailed or screwed in place.

SPECIALTY PRODUCTS

1/2" Rebar Saddle

The OCM Rebar Saddle is made from heavy duty polymer composite material. They can fit over #1/2" (#4) vertical Rebar, and can accommodate 1/2" (#4) rebar in the cradle. They are conveniently packaged in shelf ready inner bags of 200 pieces. Master box contains 2,000 pieces.

Features

- Packed in convenient bags of 200 pieces.
- Master box contains 2,000 pieces.
- Special Discount for skid quantities.


Adjustable Screed Chair

OCM Adjustable Polymer Composite Screed Chair is the perfect screed chair for use on elevated decks. Base can be fastened to wood decks.

Features

- Fits 2" x 4" lumber or 1-1/2" diameter pipe screeds.
- Includes a base, adjustable ring and a screed receiver.
- Designed to allow up to +/- 1 inch height adjustment.
- 1 O.D pvc pipe (not included) can be cut to any height.

SPECIALTY PRODUCTS cont.

Tilt Wall Form Bracket

The Tilt Wall Form Bracket is a polymer composite bracket designed to support tilt-up form boards and act as a kicker bracket on bridge decks for screed rail forming.

Features

- Patented design includes a 2" insert that snaps into the 5" bracket to create a 7" bracket.
- No need for dual inventories of 5" and 7" brackets, just buy the 2" insert as needed to convert the 5" to the 7".
- Dual spine design provides added strength and durability .
- Shoe comes with adhesive strip for superior hold on the job.


Rebar Boot

OCM REBAR BOOTS are designed to provide an easy to install, economical method properly supporting rebar vertical reinforcement and provide proper cover at the base of drilled shafts.

Features

- Provides fixed 3" Cover for Vertical Rebar
- Polymer Composite eliminates any corrosion concerns on vertical rebar.
- A single self - locking unit accommodates from #5 to #14 rebar.
- Lightweight and easy to assemble.


Stud Chair

The Stud Chair snaps on to the head of the stud of an embed plate in tilt-up and precast panels to set the embed plates at the correct height .

Features

- 2 sizes available; one for 1/2" (1" head) stud diameters and one for 3/4" (1-1/4" head) stud diameters.
- Made from strong, durable polymer composite.
- Tapered foot minimizes contact surface for invisible footprint.
- Grey color to blend with concrete.


OCM Super Shim Packs

OCM Super Shim Packs are manufactured from engineered resins specifically formulated for use in Tilt Up and Precast Construction. OCM Super Shims are used to adjust precast and tilt-up concrete panels quickly and easily.

Features

- Pack contains one (1-1/16") Yellow, three (1/4") Gray, and two (1/8") Black Super Shims.
- Concrete Elements may be leveled by removing or adding individual shims.
- Composite material prevents rust.
- Pack is protected by elastic band during placement.

SPECIALTY PRODUCTS cont.**Heavy Duty Concrete Hopper**

Heavy Duty Concrete Hoppers are designed to collect larger amounts of concrete and direct the flow of concrete into the forming setup.

Features

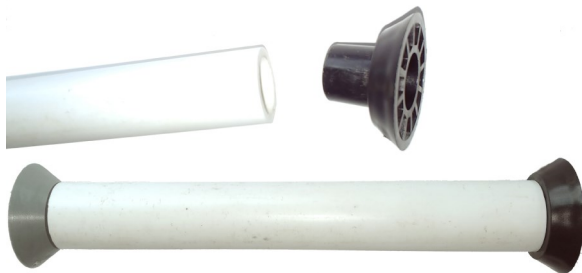
- Made from industrial grade polyethylene for high strength and durability.
- The steel reinforced ring underneath the top edge provides added strength and rigidity for improved performance.
- Discharge options at 8" or 12" depending on desired flow rate.
- Used with pvc elephant trunk and/or pvc tremie pipe to help direct the concrete flow.

**Light Duty Concrete Hopper**

Light Duty Concrete Hoppers are designed to collect larger amounts of concrete and direct the flow of concrete into the forming setup.

Features

- Made from industrial grade polyethylene for high strength and durability.
- Discharge options at 6" through 12" depending on desired flow rate.
- Economical solution for standard pours and smaller jobs.
- Used with pvc elephant trunk and/or pvc tremie pipe to help direct the concrete flow.

**Euro Push Fit Cone**

The Euro Push Fit Cone is used on each end of a schedule 40 pvc pipe to enable Euro Rod to pass through the formwork during setup and be removed during the form stripping process for later reuse.

Features

- Available in 15mm (5/8") and 20mm (7/8").
- Provides a snug fit to prevent slippage during use.
- Creates a proper setback in the wall for easy patching.

**Euro Spacer/Slip Tie Cone**

The Euro Spacer/Slip Tie Cone is placed over the ends of schedule 40 pvc pipe to enable Euro Rod to pass through the formwork during setup and be removed during the form stripping process for later reuse.

Features

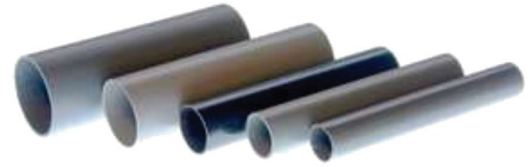
- Available in 15mm (5/8") and 20mm (7/8").
- Provides a snug fit to prevent slippage during use.
- Creates a proper setback in the wall for easy patching.

SPECIALTY PRODUCTS cont.**Form Plugs/Form Bushings**

The form bushings are used with the form plugs to create a tie hole plug in wood forms.

Features

- Made of strong, durable polymer composite.
- Designed to prevent concrete leakage when used together.

**Dowel Caps**

Dowel Caps are installed over the dowel bar to allow for longitudinal movement. They basically slip onto one side of the round dowel and allow for concrete expansion and contraction.

Features

- Available in sizes to fit #4, #5, #6, #7, #8, #10, and #12 rebar.
- Molded from heavy duty polymer composite.
- All dowel caps are 4" long.
- Corrosion resistant polymer composite.
- Internal polymer composite ribs for secure fit to dowel.

**Concrete Sleeves**

OCM Inc's Concrete Sleeves are injection molded from high strength yet flexible polyethylene. They save labor, because they are tapered and can easily be removed after the forms have been stripped. OCM Concrete Sleeves may be telescoped or cut to accommodate any slab thickness and are easy to cut with a utility knife.

Features

- Remove easily from slab due to tapered design.
- Creates a smooth round hole every time.
- Won't dent or bend.
- Tapered at 1" increments for easy removal and cutting in the field.

**Conefast (Screw On) Cone**

OCM Conefast Cones are internally threaded to screw onto the appropriate size Conefast Coil Tie to provide positive form spreader action. Made of high strength and durable polymer composite.

Features

- When used with Conefast Coil Ties they will provide a setback of metal to reduce corrosion staining on finished wall.
- Can be provided as plain or mechanically galvanized.
- When used with Conefast Coil Ties they can be used as combination tie and form spreader.

REBAR CAPS**OSHA Rebar Cap****Installation:**

1. OCM OSHA Rebar Caps are to be inspected before each use for damage. Damaged units should not be used.
2. There should be no damage to the cap or the fins that contact the exposed rebar ends. If damage such as general cracking or damaged fins is observed please discard the cap. If the fins inside are damaged it will cause the cap to not fit tightly on the end of the protruding rebar and therefore will affect the ability of this cap to function properly. This could cause serious injury or impalement if a damaged cap is used.
3. Place the OCM OSHA Rebar Cap firmly on to the end of the protruding rebar.
4. Push firmly until the OCM OSHA Rebar Cap's internal metal insert comes into contact with the end of the protruding rebar.
5. OCM OSHA Rebar Cap must be centered vertically on protruding rebar end in order to secure a tight fit.
6. Please check that the cap is secured properly on the rebar such that the top surface of the cap is set in a perpendicular manner to the vertical exposed rebar end.

Features

- Safety Orange Color made from engineered high impact polymer composite
- 4" X 4" Square Design with internal metal insert.
- REBARCAP-38OSHA fits rebar sizes #3 - #8.
- Packed in boxes of 100 pcs per box.
- Please see our Installation/Specification Sheet.

**Rebar Mushroom Cap**

The OCM Rebar Mushroom Cap is a universal polymer composite protective cap used to cover the ends of protruding rebar to prevent impalement on jobsites.

Features

- Fits #3 through #8 rebar, the most common sizes found on jobsites..
- Bright orange color for easy visibility.
- Made from durable polymer composite for many reuses.

OCM, Inc.

1120 E. Peterson Road, Grayslake, IL 60030

Toll Free: 866-457-5710 • Phone: 847-462-4258 • FAX: 847-462-4259

www.ocm-inc.com • sales@ocm-inc.com

Stocking Locations

Northern California
2192 W. Winton Ave.
Hayward, CA 94545

Denver
5670 Washington Street
Denver, CO 80216

Houston
13323 S. Gessner Rd., Suite 100
Missouri City, TX 77489

Southern California
18320 Mt. Baldy Cir.
Fountain Valley, CA 92708

Atlanta
605 Wesleyan Drive SW
Atlanta, GA 30336

Philadelphia
250 Hansen Access Road
King of Prussia, PA 19406

New Jersey
192 Clifford St.
Newark, NJ 07105

Dallas
11625 Columbia Center
Dallas, TX 75229

Kansas City
3225 Harvester Rd.
Kansas City, KS 66115

Ft. Lauderdale
200 S.W. 12th Avenue
Pompano Beach, FL 33069

Portland
1525 SE 10th Ave.
Portland, OR 97214

Minneapolis
1940 Fernbrook Lane
Plymouth, MN 55447