



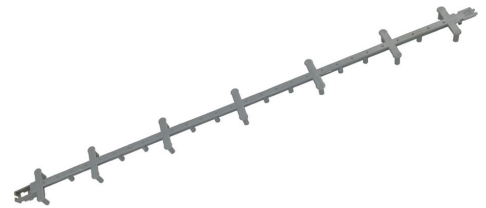
OCM

100 YEARS OF STRENGTH

PLASTIC PRODUCTS

OCM, Inc.
1120 E. Peterson Road
Grayslake, IL 60030
Toll Free: 866-457-5710
Phone: 847-462-4258
FAX: 847-462-4259
www.ocm-inc.com
sales@ocm-inc.com

PLASTIC CONTINUOUS BOLSTERS



PLASTIC INDIVIDUAL CHAIRS



PLASTIC SPACERS



PLASTIC SPECIALTY PRODUCTS



PLASTIC REBAR CAPS



PLASTIC CONTINUOUS BOLSTERS

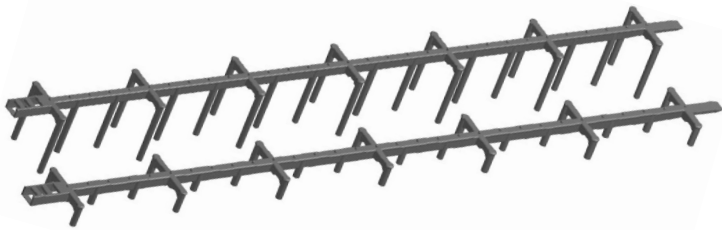


Slab Bolster Grey

The OCM Slab Bolster Grey is a heavy duty plastic slab bolster that can be used to support rebar in all types of slab or wall applications.

Features

- Interlocking end tabs provide extra strong connection and enables continuous runs of slab bolster.
- Made from heavy duty yet flexible plastic material which will withstand heavy loads, but still flexible enough to bend 180° for side wall spacers and resistant to breaking and snapping.
- Wide footprint provides stability under load.
- Flat top allows the user to slide rebar freely into position during placement.



All Plastic Beam Bolster

OCM All Plastic Beam Bolster (BBCOMP) is designed to support heavier loads encountered in forming concrete beams, segmental bridge sections, core wall form side spacers, and other applications requiring traditional Steel Beam Bolster.

OCM All Plastic Beam Bolster eliminates corrosion concerns while providing unparalleled strength capacity. BBCOMP is also flexible enough to form circles for side spacers without cracking, kinking, or breaking. BBCOMP ends are connectable achieving any lengths desired for larger projects.

Features

- Approved for use in DOT and Commercial projects.
- Meets CRSI Requirements for all Classes of corrosion protection.
- Manufactured in 8 heights from 3/4" to 3".
- Polycarbonate material produces improved load capacity.
- Supports any bar diameter.
- Individual sections easily snap together to form continuous lengths.
- All Plastic Beam Bolster is assembled in 60" lengths and bundled for easy placing, storage and shipping.



Plastic Slab Bolster - Dimpled Flat Top

The OCM Plastic slab bolster is a heavy duty plastic slab bolster that can be used to support rebar in all types of slab or wall applications.

Features

- Interlocking end tabs provide extra strong connection and enables continuous runs of slab bolster.
- Made from heavy duty yet flexible plastic material which will withstand heavy loads, but still flexible enough to bend 180° for side wall spacers and resistant to breaking and snapping.
- Wide footprint provides stability under load.
- Flat top allows the user to slide rebar freely into position during placement.



Plastic Slab Bolster Upper

OCM Plastic Slab Bolster Uppers are made from very strong composite material to support and provide proper cover for rebar in elevated slabs, tilt-wall, precast, post tension decks, and D.O.T. projects. This is the ideal product to support the second layer of rebar.

Features

- Patent 11286668.
- Meets CRSI requirements for corrosion protection, design, and performance.
- ABS material produces improved load capacity.
- Easy connection for speed of installation.
- Great alternative to plain steel, epoxy, galvanized, and stainless steel material and shipping.

PLASTIC INDIVIDUAL CHAIRS



Unichair® Plastic Rebar Support

The Unichair® Plastic Rebar Support is an all purpose individual high chair ideal for use on wood, steel, and concrete. It is also well suited for TILT-UP applications. They have been tested and approved for Department of Transportation (D.O.T) use.

Features

- The OCM Unichair® Plastic Rebar Support has an open center which allows concrete to flow through the center of the chair to improve aggregate flow and concrete consolidation.
- Made from high strength plastic material, so they perform very well under normal loads and will not rust.
- They have angled legs to prevent torsion and buckling.
- Sizes above 4 3/4" have an added ring for improved strength and stability.
- Feet are tapered so there is minimum surface contact to make chairs virtually disappear when form face is stripped. Legs can also be stapled for added stability.
- Cradle shaped top to aid in positioning of rebar.
- Concrete gray color helps them to blend in with concrete color.
- Dual cradle head allows for 1 chair to be used for 2 different heights. Decreases amount of inventory, and increases flexibility for use of each chair.



Sand Plate for Unichair® Plastic Rebar Support

Snap-on plastic sand plate for Unichair® Plastic Rebar Support.

Features

- Applications: Slab on grade, insulated sandwich panel, Department of Transportation (D.O.T.), vapor barrier, poor or loosely compacted soil.

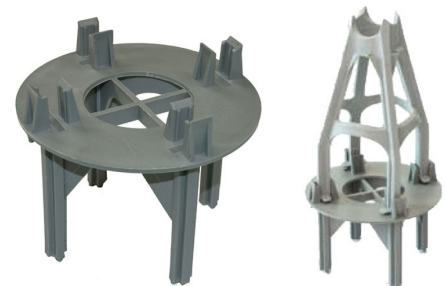


Adjustable Plastic Unichair®

The OCM Adjustable Plastic Unichair® is a versatile plastic support that provides a range of heights for multiple applications.

Features

- Patent pending.
- 3 different chair sizes to provide a total height range from 3" on the smallest chair to 18.5" on the tallest chair.
- Each chair shows the exact height along the threaded rod to ensure the proper height is achieved .
- Dual cradle head allows for 2 different heights 1/2" apart .
- Tapered footprint for minimal surface contact on wood decks.
- Very strong plastic and design.
- Chair can be used for rebar loading, post tension strand, and ledger supports in tilt walls and precast panels.
- Removable coil threaded rod may be replaced with steel coil rod and converted to a screed pipe holder.



Unichair® Plastic Rebar Support 4" Base Extension

Our patented, stackable design creates an all plastic high chair 10" and taller to speed up both rebar placement and post-tension cable installation. Stack as many Unichair® Plastic Rebar Support 4" Base Extensions on top of each other as you need before placing the final Unichair® Plastic Rebar Support on top.

Features

- Wide, stable base to prevent tipping during placement.
- Same tapered footprint that disappears from concrete face.
- Made of very strong plastic to support heavy loads.
- Very secure connection for consistent height and performance.

PLASTIC INDIVIDUAL CHAIRS cont.



Unichair® Plastic Rebar Support 2" Base Extension

Our patented, stackable design has been expanded to include the new 2" Base Extension. The 2" Base Extension is used with Unichair® Plastic Rebar Supports from 1" to 5-3/4" to speed up both rebar placement and post-tension cable installation. Stack as many Unichair® Plastic Rebar Support 2" Base Extensions on top of each other as you need before placing the final Unichair® Plastic Rebar Support on top.

Features

- Instantly provides a solution for out of stock sizes.
- Reduce Inventory SKU's for slower moving heights.
- Wide, stable base to prevent tipping during placement.
- Same tapered footprint that disappears from concrete face.
- Made of very strong plastic to support heavy loads.
- Very secure connection for consistent height and performance.



Plastic Cradle Chair (PCC)

OCM Plastic Cradle Chair may be used to support mesh or rebar in many applications requiring heavy load capacity. Common applications include slab on grade, insulated sandwich panels, vapor barrier, and on poorly compacted or loose soils. OCM Plastic Cradle Chairs meet current CRSI requirements.

Features

- Excellent strength capacity - Holds over 600 lbs.
- Cradle will accommodate up to #8 re-bar.
- Multiple heights - 2 heights per chair.
- Will not puncture vapor barrier or insulation.



Stack-O-Chair™

The Plastic Stack-O-Chair™ is a stackable chair that enables multiple height combinations in precast beds or on wood decks.

Features

- 2 sizes: 1-1/2" to 2" and 2-1/2" to 3".
- Unlimited stacking to achieve desired height.
- Made from strong, durable plastic.
- Can be used with small sand plate and 2" Base Extension for added versatility.
- Can be used with PHC chairs .75" to 5.75"
- Utility and Design Patent pending.



Grade Chair With Base

The OCM Grade Chair with Base is designed with a wide base ring to provide stability on loosely compacted or expansive soils.

Features

- Made from high strength plastic material which provides good performance under loading conditions.
- "Snap-in top" locks rebar into chair for secure placement.
- Each chair comes in 2 height combinations to provide flexibility based on grading conditions and helps to reduce inventory.
- Meet CRSI requirements per table 3-4.

PLASTIC INDIVIDUAL CHAIRS cont.

Plastic Paving Chairs

The OCM Plastic Paving Chairs are a versatile Snap on Chair that is used for on-grade and Department of Transportation (D.O.T) work. This chair is available in black or white and it is ideal for highway paving applications.

Features

- Snaps easily on to rebar for secure placement.
- Round base for loose or sandy grades.


Pro Chairs

OCM, Inc's Pro Chairs are made with high performance, high strength plastic material that won't rust. The cradle shaped head will provide aid in positioning rebar. The 2-in-1 cradle head allows for one Pro Chair to be used for two different heights, reducing the amount of inventory you need to take on.

Features

- Made with high performance, high strength plastic material.
- No rusting.
- Cradle shaped for aid in positioning rebar.
- The 2-in-1 cradle head allows for one Pro Chair to be used for two different heights, reducing your amount of inventory.
- Tapered foot design for minimal surface contact.

PLASTIC SPACERS

Wheel Spacers—Mesh

OCM Wheel Spacers are an All Plastic spacer used as an economical Mesh support in vertical and horizontal formwork applications.

Features

- Eliminates exposed metal from the face of concrete.
- Minimal footprint on face of form.
- Openings allow proper concrete coverage.
- Designed to fit large range of Mesh gauges.


Wheel Spacers—Rebar

OCM Wheel Spacers is a rebar support which are a quick easy installation used as an economical support in vertical or horizontal formwork.

Features

- Eliminates exposed metal from the face of concrete.
- Minimal footprint on face of form.
- Openings allow proper concrete flow.
- Accommodates #3 to #6 Rebar and can be used with wire mesh.
- Available in sizes from 3/4" to 3" coverage.

PLASTIC SPACERS cont.

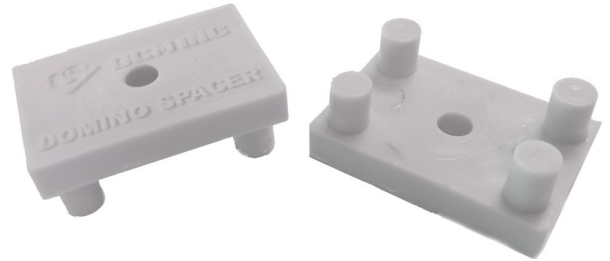


Plastic Locking Wheel Spacer

The OCM Plastic Locking Wheel Spacer is a plastic bar support used to maintain the position of rebar during placement and is typically used in lateral positioning applications. It can be used to position vertical rebar from the side forms.

Features

- Very Strong and Durable Plastic Rebar Support.
- Positive Tight Locking on to Rebar.
- Color is Matched to Concrete Color.
- Unique Patent Pending Locking Latch Available in sizes from 3/4" to 3" coverage.



OCM All-Purpose Plastic Domino Spacer

All-purpose 1" x 1-1/2" x 1/2" tall plastic domino spacer.

Features

- Keep all steel forming parts from showing through formed concrete walls and decks.
- Keep metal tips, tie wire, steel strapping, and any miscellaneous steel parts off of the finished concrete surface.
- Concrete grey color and small footprint provides minimal surface contact to blend into exposed concrete surfaces to make spacers virtually disappear.
- Designed to be nailed or screwed in place.

PLASTIC SPECIALTY PRODUCTS



1/2" Plastic Rebar Saddle

The OCM Plastic Rebar Saddle is made from heavy duty plastic material. They can fit over 1/2" (#4) vertical Rebar, and can accommodate 1/2" (#4) rebar in the cradle. They are conveniently packaged in shelf ready inner bags of 200 pieces. Master box contains 2,000 pieces.

Features

- Packed in convenient bags of 200 pieces.
- Master box contains 2,000 pieces.
- Special Discount for skid quantities.



Adjustable Plastic Screed Chair

OCM Adjustable Plastic Screed Chair is the perfect screed chair for use on elevated decks. Base can be fastened to wood decks.

Features

- Fits 2" x 4" lumber or 1-1/2" diameter pipe screeds.
- Includes a base, adjustable ring and a screed receiver.
- Designed to allow up to +/- 1 inch height adjustment.
- 1 O.D pvc pipe (not included) can be cut to any height.

PLASTIC SPECIALTY PRODUCTS cont.



Tilt Wall Form Bracket

The Tilt Wall Form Bracket is a plastic bracket designed to support tilt-up form boards and act as a kicker bracket on bridge decks for screed rail forming.

Features

- Patented design includes a 2" insert that snaps into the 5" bracket to create a 7" bracket.
- No need for dual inventories of 5" and 7" brackets, just buy the 2" insert as needed to convert the 5" to the 7".
- Dual spine design provides added strength and durability .
- Shoe comes with adhesive strip for superior hold on the job.



Plastic Stud Chair

The Plastic Stud Chair snaps on to the head of the stud of an embed plate in tilt-up and precast panels to set the embed plates at the correct height .

Features

- 2 sizes available; one for 1/2" (1" head) stud diameters and one for 3/4" (1-1/4" head) stud diameters.
- Made from strong, durable plastic.
- Tapered foot minimizes contact surface for invisible footprint.
- Grey color to blend with concrete.



Plastic Rebar Boot

OCM PLASTIC REBAR BOOTS are designed to provide an easy to install, economical method properly supporting rebar vertical reinforcement and provide proper cover at the base of drilled shafts.

Features

- Provides fixed 3" Cover for Vertical Rebar
- Plastic eliminates any corrosion concerns on vertical rebar.
- A single self - locking unit accommodates from #5 to #14 rebar.
- Lightweight and easy to assemble.



OCM Super Shim Packs

OCM Super Shim Packs are manufactured from engineered resins specifically formulated for use in Tilt Up and Precast Construction. OCM Super Shims are used to adjust precast and tilt-up concrete panels quickly and easily.

Features

- Pack contains one (1-1/16") Yellow, three (1/4") Gray, and two (1/8") Black Super Shims.
- Concrete Elements may be leveled by removing or adding individual shims.
- Composite material prevents rust.
- Pack is protected by elastic band during placement.

PLASTIC SPECIALTY PRODUCTS cont.

Heavy Duty Concrete Hopper

Heavy Duty Concrete Hoppers are designed to collect larger amounts of concrete and direct the flow of concrete into the forming setup.

Features

- Made from industrial grade polyethylene for high strength and durability.
- The steel reinforced ring underneath the top edge provides added strength and rigidity for improved performance.
- Discharge options at 8" or 12" depending on desired flow rate.
- Used with pvc elephant trunk and/or pvc tremie pipe to help direct the concrete flow.


Light Duty Concrete Hopper

Light Duty Concrete Hoppers are designed to collect larger amounts of concrete and direct the flow of concrete into the forming setup.

Features

- Made from industrial grade polyethylene for high strength and durability.
- Discharge options at 6" through 12" depending on desired flow rate.
- Economical solution for standard pours and smaller jobs.
- Used with pvc elephant trunk and/or pvc tremie pipe to help direct the concrete flow.


Plastic Euro Push Fit Cone

The Plastic Euro Push Fit Cone is used on each end of a schedule 40 pvc pipe to enable Euro Rod to pass through the formwork during setup and be removed during the form stripping process for later reuse.

Features

- Available in 15mm (5/8") and 20mm (7/8").
- Provides a snug fit to prevent slippage during use.
- Creates a proper setback in the wall for easy patching.


Plastic Euro Spacer/Slip Tie Cone

The Plastic Euro Spacer/Slip Tie Cone is placed over the ends of schedule 40 pvc pipe to enable Euro Rod to pass through the formwork during setup and be removed during the form stripping process for later reuse.

Features

- Available in 15mm (5/8") and 20mm (7/8").
- Provides a snug fit to prevent slippage during use.
- Creates a proper setback in the wall for easy patching.

PLASTIC SPECIALTY PRODUCTS cont.



Plastic Form Plugs/Form Bushings

The plastic form bushings are used with the plastic form plugs to create a tie hole plug in wood forms.

Features

- Made of strong, durable plastic.
- Designed to prevent concrete leakage when used together.



Plastic Dowel Caps

Plastic Dowel Caps are installed over the dowel bar to allow for longitudinal movement. They basically slip onto one side of the round dowel and allow for concrete expansion and contraction.

Features

- Available in sizes to fit #4, #5, #6, #7, #8, #10, and #12 rebar.
- Molded from heavy duty plastic.
- All dowel caps are 4" long.
- Corrosion resistant plastic.
- Internal plastic ribs for secure fit to dowel.



Concrete Sleeves

OCM Inc's Concrete Sleeves are injection molded from high strength yet flexible polyethylene. They save labor, because they are tapered and can easily be removed after the forms have been stripped. OCM Concrete Sleeves may be telescoped or cut to accommodate any slab thickness and are easy to cut with a utility knife.

Features

- Remove easily from slab due to tapered design.
- Creates a smooth round hole every time.
- Won't dent or bend.
- Tapered at 1" increments for easy removal and cutting in the field.



Conefast (Screw On) Cone

OCM Plastic Conefast Cones are internally threaded to screw onto the appropriate size Conefast Coil Tie to provide positive form spreader action. Made of high strength and durable plastic.

Features

- When used with Conefast Coil Ties they will provide a setback of metal to reduce corrosion staining on finished wall.
- Can be provided as plain or mechanically galvanized.
- When used with Conefast Coil Ties they can be used as combination tie and form spreader.

PLASTIC REBAR CAPS**OSHA Rebar Cap****Installation:**

1. OCM OSHA Rebar Caps are to be inspected before each use for damage. Damaged units should not be used.
2. There should be no damage to the cap or the fins that contact the exposed rebar ends. If damage such as general cracking or damaged fins is observed please discard the cap. If the fins inside are damaged it will cause the cap to not fit tightly on the end of the protruding rebar and therefore will affect the ability of this cap to function properly. This could cause serious injury or impalement if a damaged cap is used.
3. Place the OCM OSHA Rebar Cap firmly on to the end of the protruding rebar.
4. Push firmly until the OCM OSHA Rebar Cap's internal metal insert comes into contact with the end of the protruding rebar.
5. OCM OSHA Rebar Cap must be centered vertically on protruding rebar end in order to secure a tight fit.
6. Please check that the cap is secured properly on the rebar such that the top surface of the cap is set in a perpendicular manner to the vertical exposed rebar end.

Features

- Safety Orange Color made from engineered high impact plastic.
- 4" X 4" Square Design with internal metal insert.
- REBARCAP-38OSHA fits rebar sizes #3 - #8.
- Packed in boxes of 100 pcs per box.
- Please see our Installation/Specification Sheet.

**Rebar Mushroom Cap**

The OCM Rebar Mushroom Cap is a universal plastic protective cap used to cover the ends of protruding rebar to prevent impalement on jobsites.

Features

- Fits #3 through #8 rebar, the most common sizes found on jobsites..
- Bright orange color for easy visibility.
- Made from durable plastic for many reuses.

OCM, Inc.

1120 E. Peterson Road, Grayslake, IL 60030

Toll Free: 866-457-5710 • Phone: 847-462-4258 • FAX: 847-462-4259

www.ocm-inc.com • sales@ocm-inc.com

Stocking Locations**Northern California**

2192 W. Winton Ave.
Hayward, CA 94545

Denver

5670 Washington Street
Denver, CO 80216

Houston

13323 S. Gessner Rd., Suite 100
Missouri City, TX 77489

Southern California

18320 Mt. Baldy Cir.
Fountain Valley, CA 92708

Atlanta

605 Wesleyan Drive SW
Atlanta, GA 30336

Philadelphia

250 Hansen Access Road
King of Prussia, PA 19406

New Jersey

192 Clifford St.
Newark, NJ 07105

Dallas

11625 Columbia Center
Dallas, TX 75229

Kansas City

3225 Harvester Rd.
Kansas City, KS 66115

Ft. Lauderdale

200 S.W. 12th Avenue
Pompano Beach, FL 33069

Portland

1525 SE 10th Ave.
Portland, OR 97214

Minneapolis

1940 Fernbrook Lane
Plymouth, MN 55447